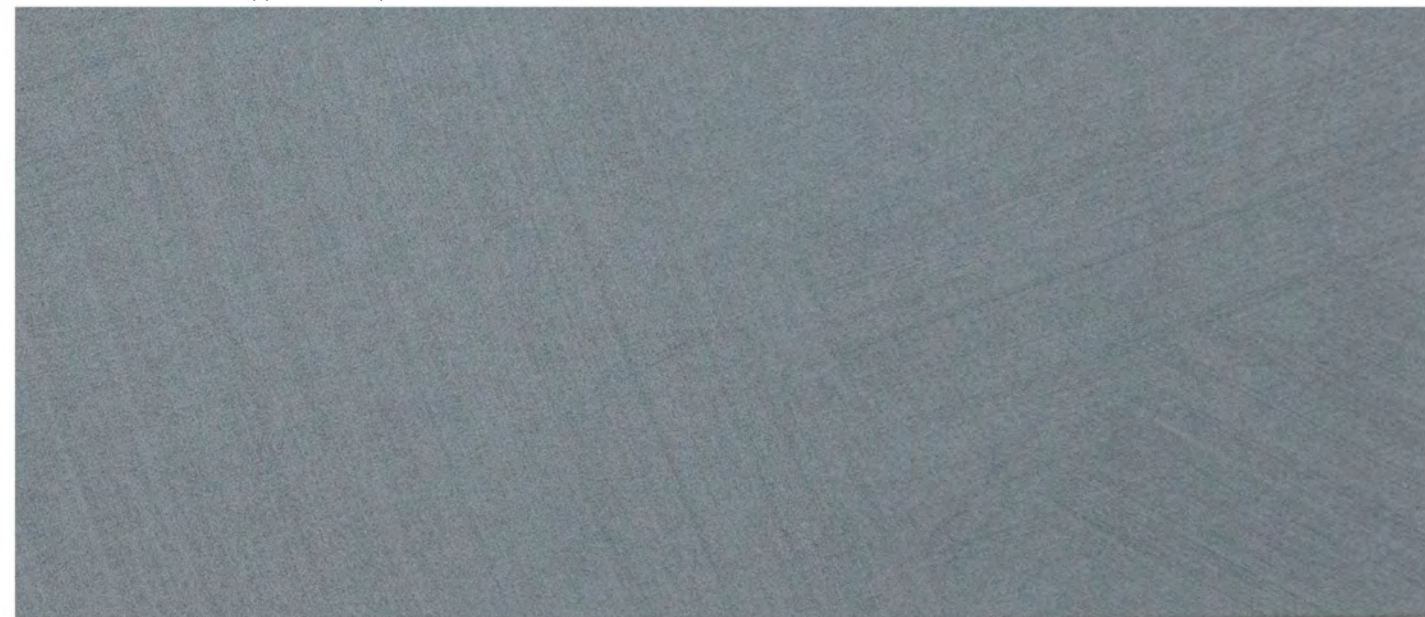


COLORE 108 - 1 Toner - Applicazione a frattazzo



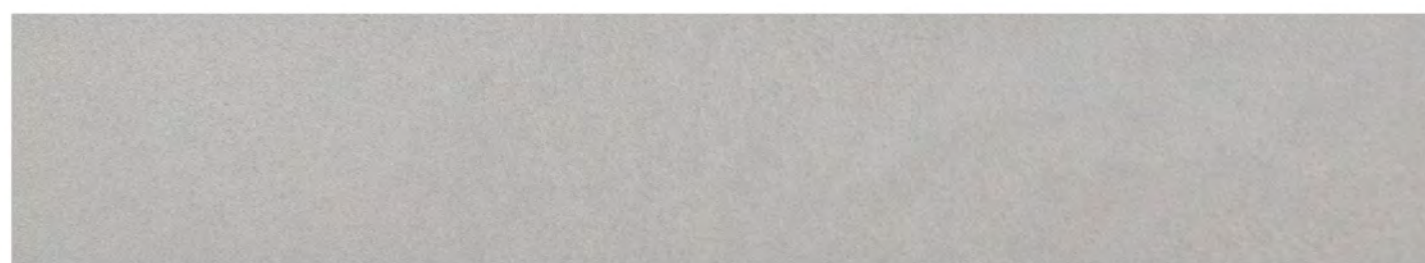
COLORE 108 - 1 Toner - Applicazione a pennello



COLORE 390 - 1 Toner



COLORE 110 - 1 Toner



Arabesque

Candis Srl
Via Vittorio Emanuele, 46
Andezeno (TO) - 10020
Italia

Tel (+39) 01194 34 556
Fax (+39) 01194 34 278

info@candis.it
www.candis.it
Seguici su

Made in Italy

Caratteristiche tecniche

Arabesque è una decorazione a base acqua mediamente traspirante, ecologica e prodotta con un'attenta scelta delle materie prime. È formulato con microparticelle che, orientandosi durante l'applicazione, conferiscono al prodotto magici effetti chiaro-scuro, una mano vellutata al tatto e affascinanti riflessi setosi.

CONFEZIONAMENTO:	LATTA DA 1,25 / 2,5 / 10 LT
PREPARAZIONE PARETI:	FONDO ATF BIANCO (2,5 / 10 LT)
PREPARAZIONE DEL PRODOTTO:	ARABESQUE (2,5 LT) + TONER COLORE (250 ML)
STRUMENTAZIONE:	PENNELLO AFT + FRATTAZZO PLASTICA CANDIS
RESA INDICATIVA:	95-140 ML/ M² (1 MANO)
ESSICCAZIONE:	AL TATTO 2-3 ORE; COMPLETA IN 20-25 GIORNI
C.O.V. NEL PRODOTTO:	INFERIORE A 50 GR/L (VALEORE LIMITE EU DI 200 GR/L)

Caractéristiques techniques

Arabesque est une décoration à base d'eau, moyennement transpirante, écologique et produite avec un choix rigoureux de matières. Il est formulé avec des microparticules qui, s'orientant lors de l'application, confèrent au produit des effets magiques, un toucher velouté et des reflets soyeux fascinants.

CONDITIONNEMENT:	BOITE 1,25 / 2,5 / 10 L
PREPARATION DU MUR:	FONDO ATF BIANCO (2,5 / 10 L)
PREPARATION DU PRODUIT:	ARABESQUE (2,5 L) + TONER COLORANT (250 ML)
OUTIL:	PINCEAU ATF + TALOCHE EN PLASTIQUE CANDIS
RENDEMENT INDICATIF:	95-140 ML/ M² (1 COUCHE)
TEMPS DE SECHAGE:	SEC AU TOUCHER 2-3 HEURES; POLYMERISATION 20-25 JOURS
C.O.V. DU PRODUIT:	MOINS DE 50 GR/L (VALEUR LIMITE AUTORISEE 200 GR/L)

Technical features

Arabesque is a water based decorative, averagely breathable and ecological, produced through a careful selection of raw materials. It's formulated with microparticles which, by orienting themselves during the application, give to the product magical light effects, a velvety touch and fascinating silky reflections.

PACKAGING:	1,25 / 2,5 / 10 L CAN
WALL PREPARATION:	FONDO ATF BIANCO (2,5 / 10 L)
PRODUCT PREPARATION:	ARABESQUE (2,5 LT) + COLOR TONER (250 ML)
TOOLS:	ATF BRUSH + CANDIS PLASTIC TROWEL
INDICATIVE YIELD:	95-140 ML/ M² (1 COAT)
DRYING TIME:	TOUCH-DRY IN 2-3 HOURS; TOTAL 20-25 DAYS
V.O.C. CONTENT OF PRODUCT:	LESS THAN 50 GR/L (MAX EU LIMIT ALLOWED 200 GR/L)

Technische eigenschaften

Arabesque ist eine wasserbasierte Dekoration durchschnittlich atmungsaktiv, ökologisch und mit einer sorgfältigen Auswahl der Rohstoffe hergestellt. Es besteht aus Mikropartikeln, die dem Produkt magische Lichteffekte, eine samtige Note und faszinierende Reflexionen verleihen.

VERPACKUNG:	GEBINDE VON 1,25 / 2,5 / 10 L
VORBEREITUNG DER WÄNDE:	FONDO ATF BIANCO (2,5 / 10 L)
PRODUKTVORBEREITUNG:	ARABESQUE (2,5 L) + FARBTONER (250 ML)
OUTIL:	PINSEL ATF + PLASTIK KELLE CANDIS
INDIKATIVE AUSBEUTE:	95-140 ML/ M² (1 SCHRITT)
TROCKENZEITEN:	ZUR NOTE 2-3 STUNDEN; GESAMT 20-25 TAGE
C.O.V. IM FERTIGEN PRODUKT:	WENIGER ALS 50 G/L (WENIGER EU ALS 200 G/L)



è un marchio
CANDIS



IT A Campioni colore ad applicazione reale da intendere in quanto le condizioni della parete possono comportare variazioni di tono, senza per questo essere oggetto di contestazioni.
ENG Real-life colour chips are intended to be indicative as wall conditions can lead to variations, without this being subject to controversy.
DEA Zeichnungen de couleurs réelles est destinée à être indicatif car les conditions de mur peuvent entraîner des variations, sans que cela fasse objet d'une controverse.
DEU Farbproben Echtfarben-Parlansystem realisiert, die als Wandverfärbungseindrücke sind, können zu Variationen führen, ohne dass dies Kontroversen unterliegen.

5000 - 07/2020

Arabesque



COLLEZIONE MODERN DÉCO — EFFETTO CHIARO-SCURO VELLUTATO



RIFLESSIONI
Gradazioni di tonalità delicate



SETOSO
Al tatto effetto vellutato



POSA RAPIDA
Applicazione molto veloce

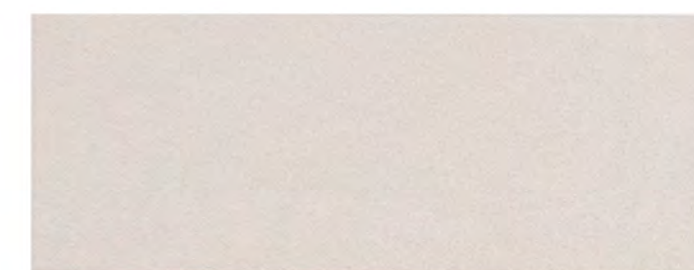
CANDIS

Arabesque conferisce agli ambienti un'eleganza ricercata, con delicate gradazioni di tonalità e un effetto vellutato al tatto. Il tutto con una rapidità di applicazione senza eguali.

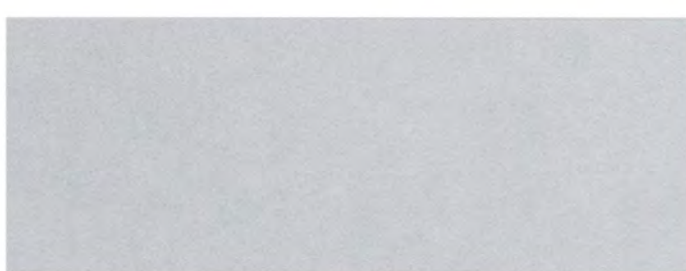
COLORE 16 - 1 Toner



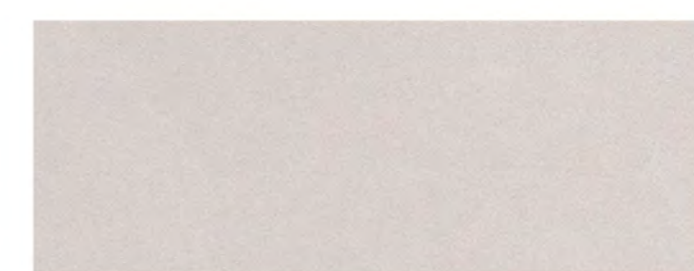
COLORE 128 - 1 Toner



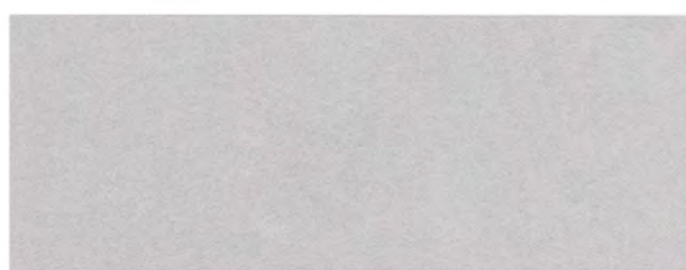
COLORE 12 - 1 Toner



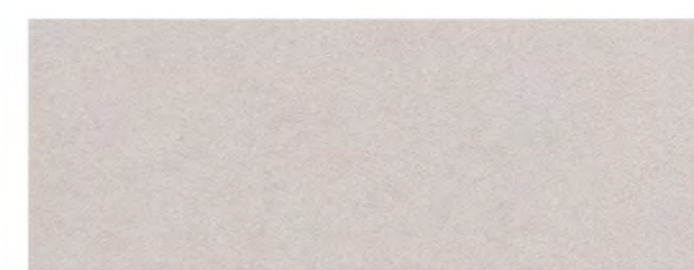
COLORE 7 - 1 Toner



COLORE 34 - 1 Toner



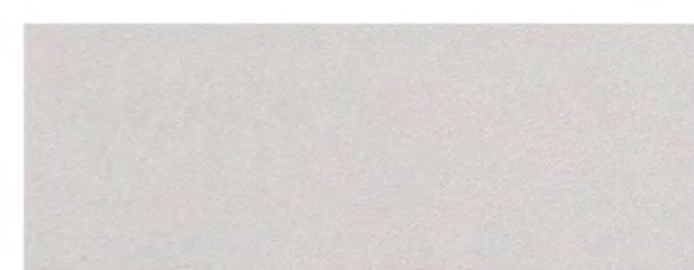
COLORE 6 - 1 Toner



COLORE 113 - 1 Toner



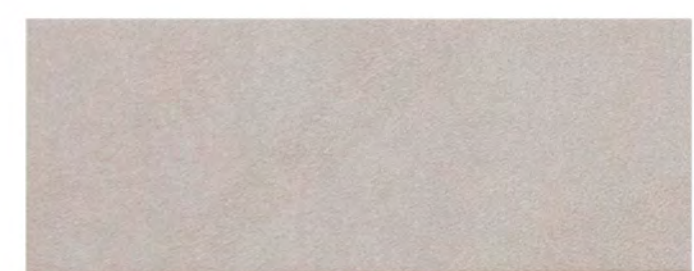
COLORE 8 - 1 Toner



COLORE 110 - 1 Toner



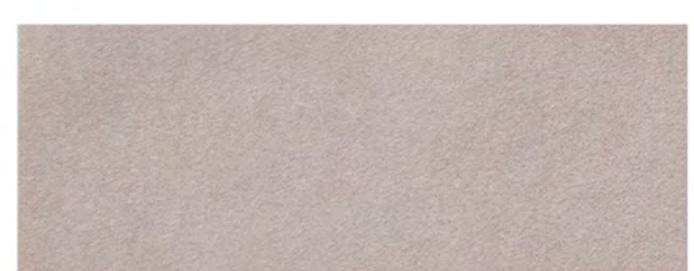
COLORE 243 - 1 Toner



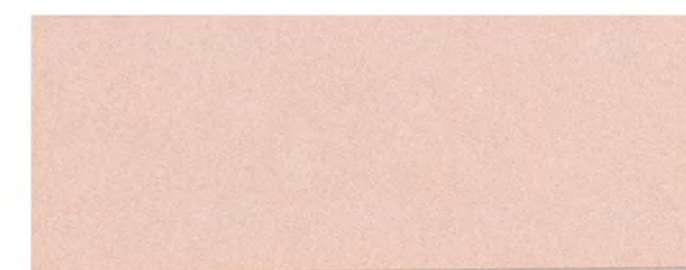
COLORE 36 - 1 Toner



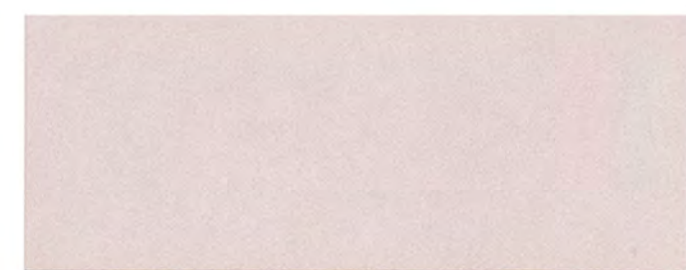
COLORE 245 - 1 Toner



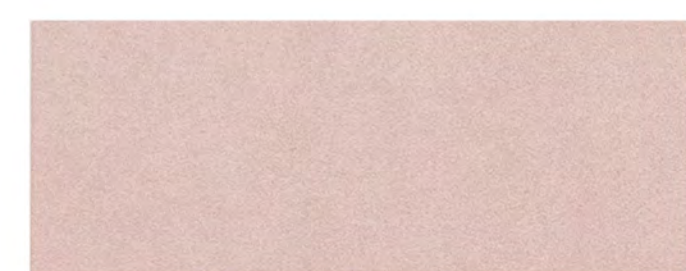
COLORE 3 - 1 Toner



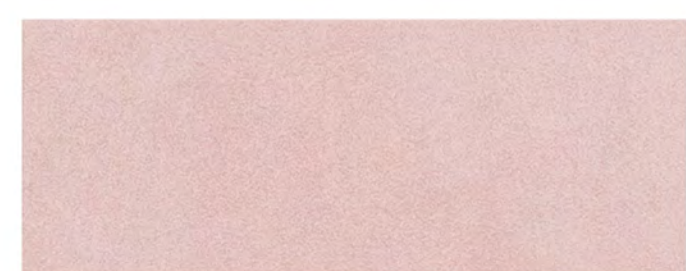
COLORE 1 - 1 Toner



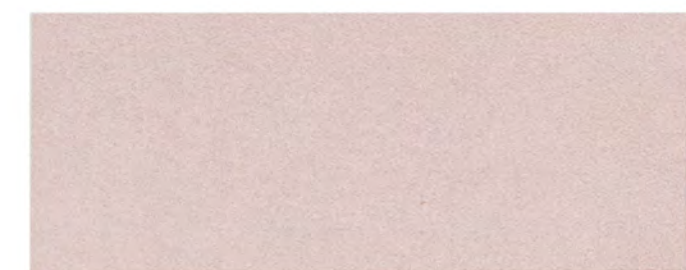
COLORE 4 - 1 Toner



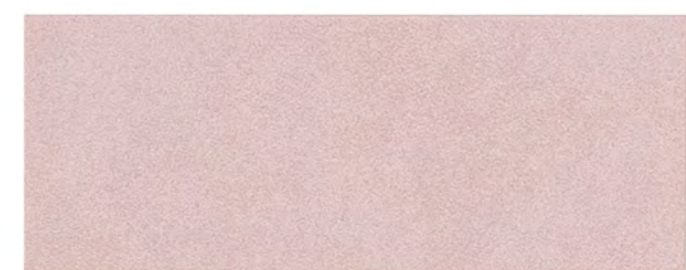
COLORE 31 - 1 Toner



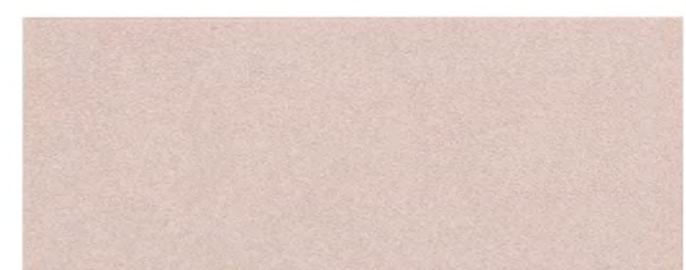
COLORE 35 - 1 Toner



COLORE 241 - 1 Toner



COLORE 32 - 1 Toner



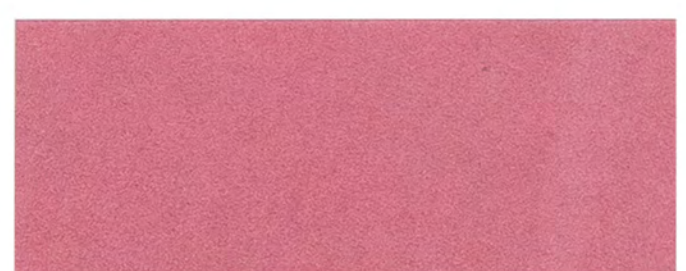
COLORE 427 - 1 Toner



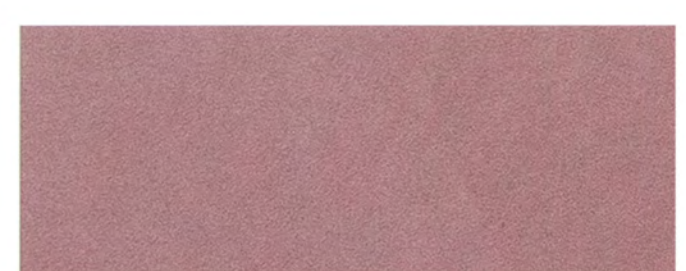
COLORE 178 - 1 Toner



COLORE 43 - 1 Toner



COLORE 240 - 1 Toner



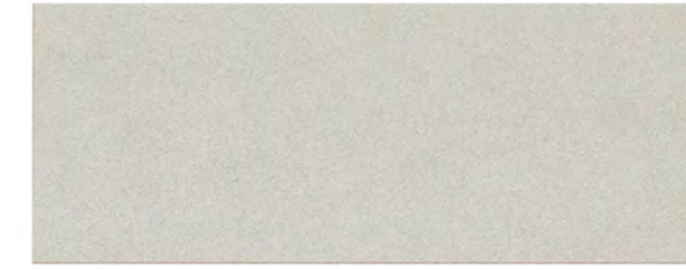
COLORE 420 - 1 Toner



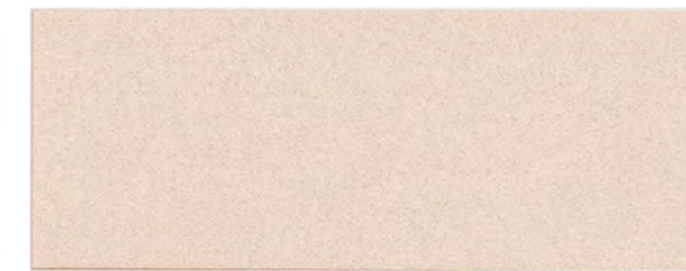
COLORE 104 - 1 Toner



COLORE 106 - 1 Toner



COLORE 19 - 1 Toner



COLORE 22 - 1 Toner



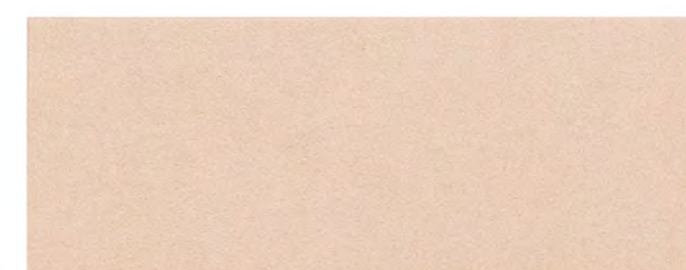
COLORE 5 - 1 Toner



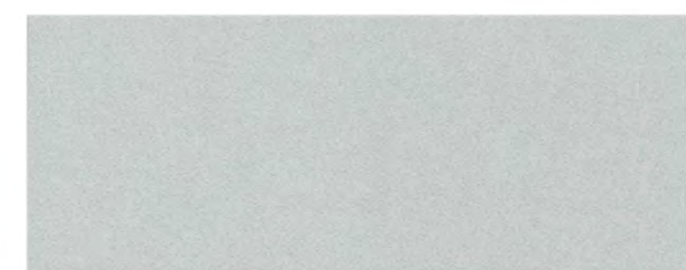
COLORE 9 - 1 Toner



COLORE 26 - 1 Toner



COLORE 172 - 1 Toner



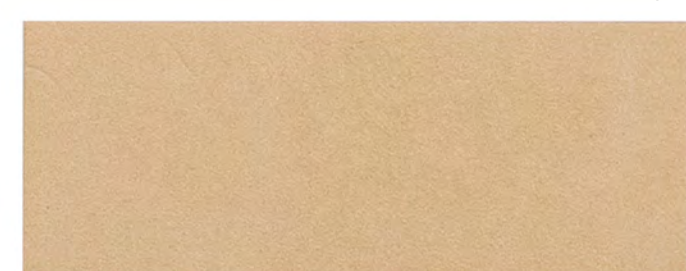
COLORE 30 - 1 Toner



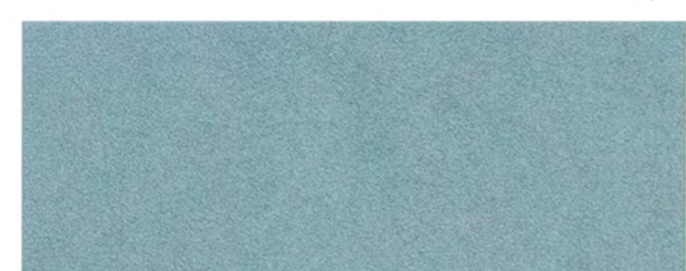
COLORE 183 - 1 Toner



COLORE 418 - 1 Toner



COLORE 410 - 1 Toner



COLORE 10 - 1 Toner



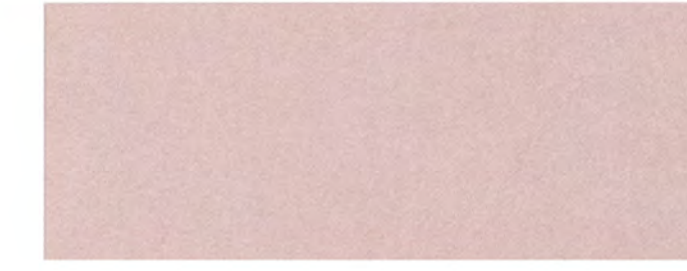
COLORE 27 - 1 Toner



COLORE 33 - 1 Toner



COLORE 2 - 1 Toner



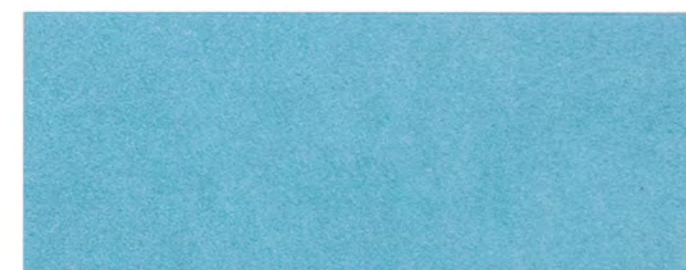
COLORE 11 - 1 Toner



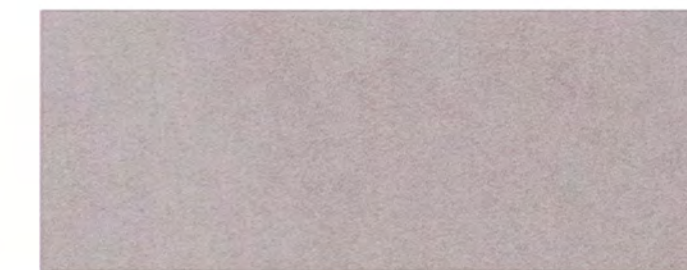
COLORE 24 - 1 Toner



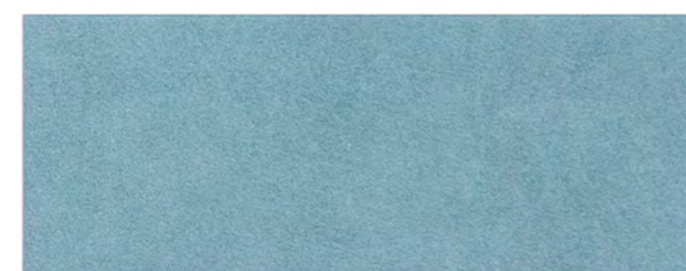
COLORE 47 - 1 Toner



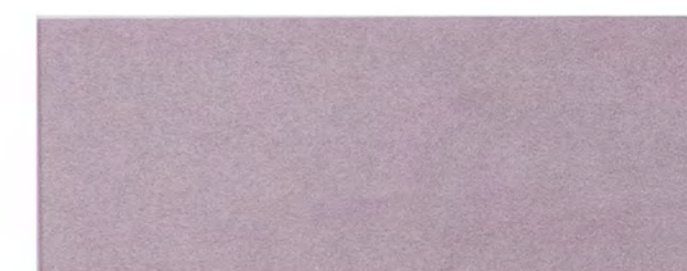
COLORE 244 - 1 Toner



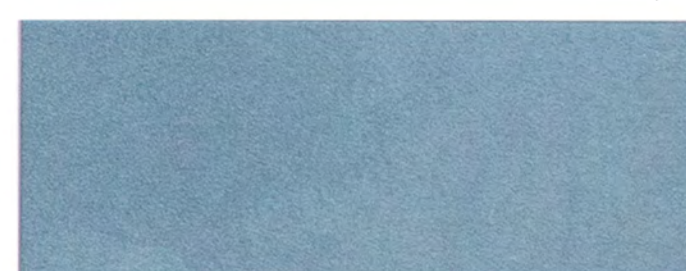
COLORE 405 - 1 Toner



COLORE 413 - 1 Toner



COLORE 400 - 1 Toner



COLORE 414 - 1 Toner

